

PALM ISLES II, A P.U.D.

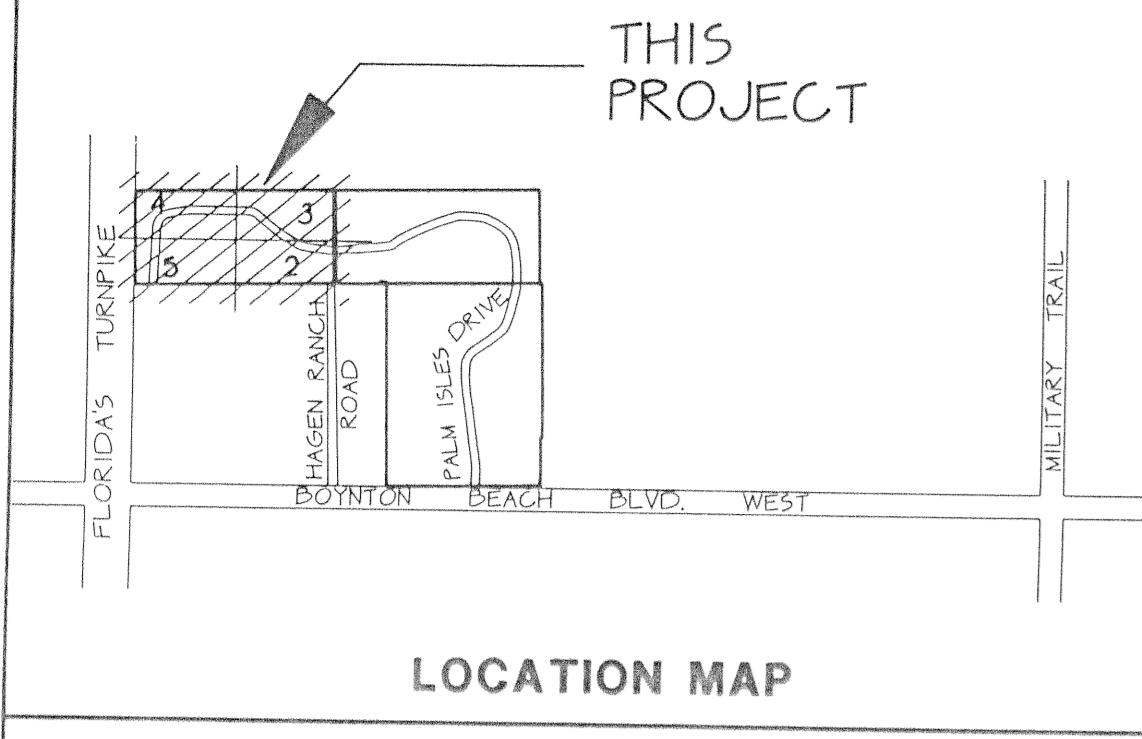
A REPLAT OF A PORTION OF TRACT U OF PALM ISLES, A P.U.D.
AS RECORDED IN PLAT BOOK 67, PAGES 116 THROUGH 127 INCLUSIVE OF THE PUBLIC RECORDS OF PALM BEACH COUNTY, FLORIDA
ALL IN SECTION 21, TOWNSHIP 45 SOUTH, RANGE 42 EAST, PALM BEACH COUNTY, FLORIDA

THIS INSTRUMENT PREPARED BY JAMES E. PARK, P.L.S.
WILLIAMS, HATFIELD & STONER, INC. - ENGINEERS PLANNERS SURVEYORS
1325 SOUTH CONGRESS AVENUE, SUITE 118, BOYNTON BEACH, FLORIDA 33426

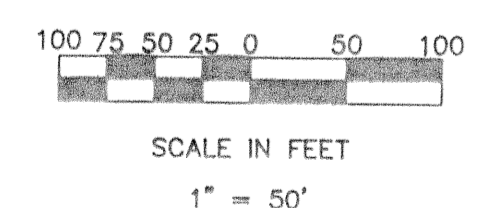
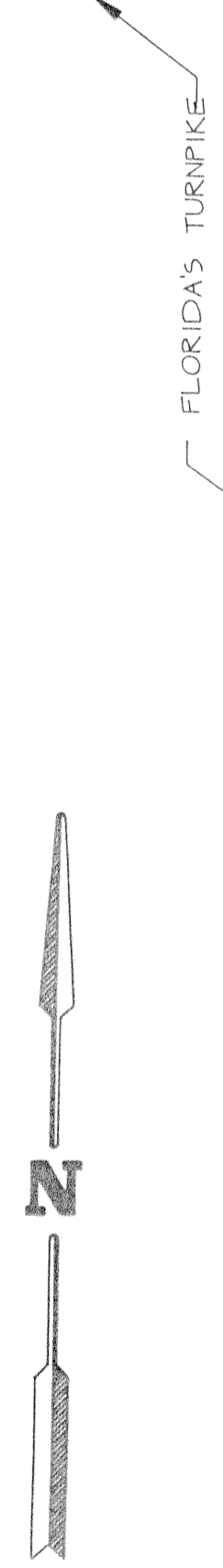
0571-006

03

SHEET 5 OF 5

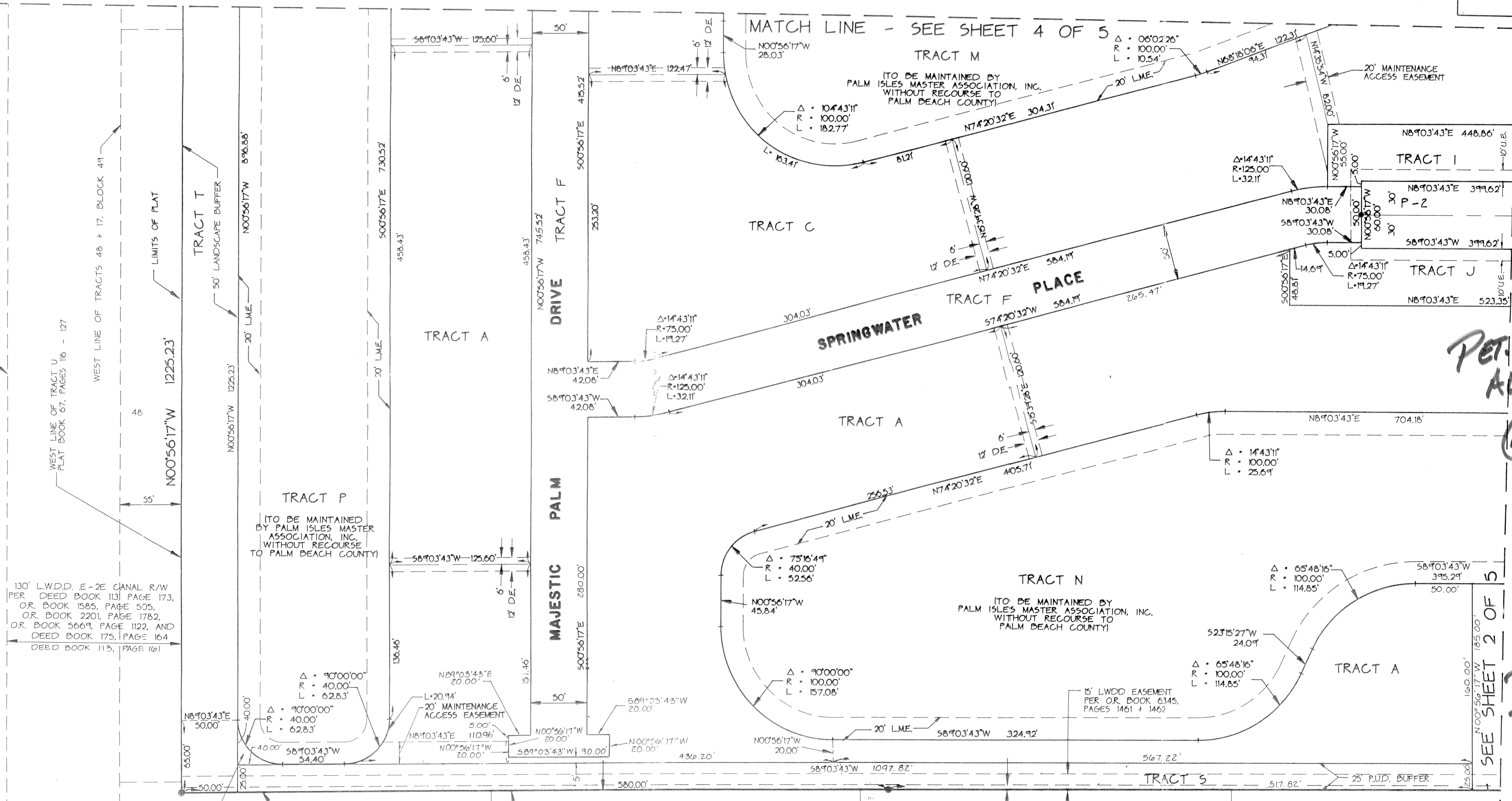


LOCATION MAP



REPLAT OF PALM ISLES III
PLAT NO. 71
PAGES 15
71-92
RS
71-92
P.L.S.
PALM ISLES

TAZ 4-43



PET. 87-92(A)
ALLOC. #0001
(NO SCHOOLS-OVERRIDE)

PHASE 3
TR. L.M., N

SEE SHEET 2 OF 5

0571-006

Palm ISLES III 7/93